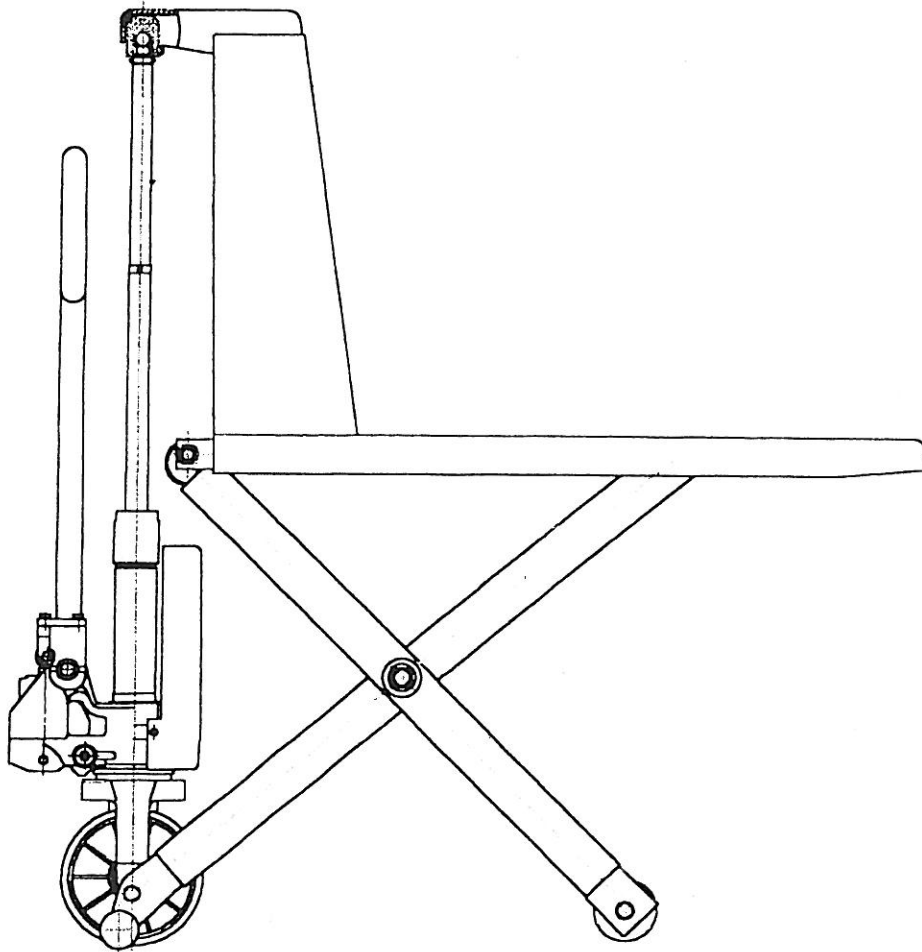


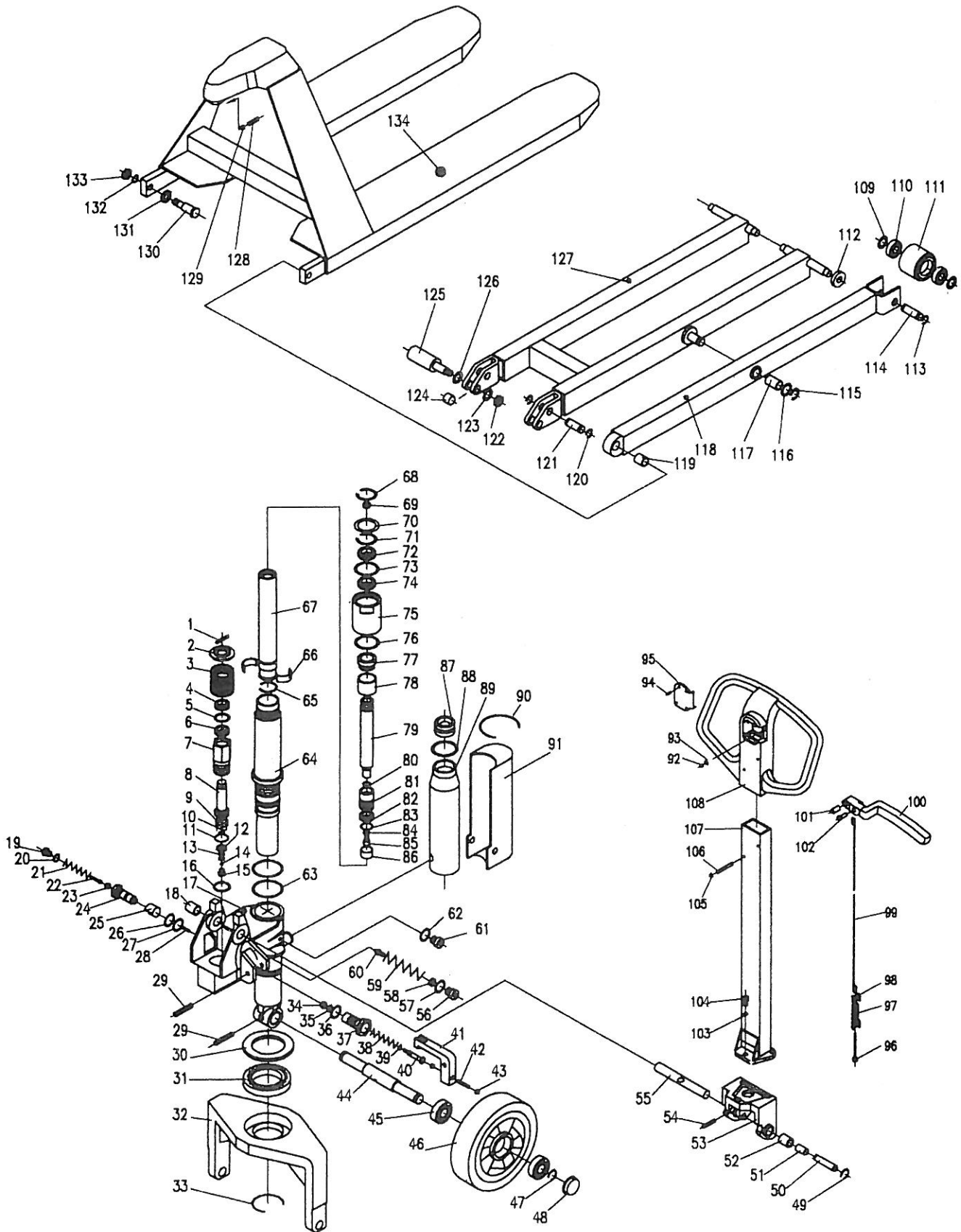
Operation Instruction

PSL-II

HIGH-LIFT PALLET TRUCK



VIEW OF PSL-II HIGH-LIFT PALLET TRUCK



PSL- II HIGH-LIFT PALLET TRECK

PART LISTS

PART NO	DESCRIPTION	QTY	PART NO	DESCRIPTION	QTY
1	PIN	1	70	WASHER	1
2	SPRING CAP	1	71	SNAP RING	1
3	SPRING	1	72	DUST SEAL	1
4*	DUST SEAL	1	73*	O-RING	1
5*	BACK-UP RING	1	74*	Y-RING	1
6*	O-RING	1	75	CYLINDER HEAD	1
7	PUMP CYLINDER	1	76*	O-RING	1
8	PUMP PISTON	1	77	BRONZE BUSHING	1
9	SPRING AND STEEL BALL	2	78	STEEL SLEEVE	1
10*	SPRING	1	79	PISTON ROD	1
11*	O-RING	1	80*	O-RING	1
12	CAP	1	81	PISTON	1
13*	O-RING	2	82*	Y-RING	1
14	STEEL BALL	1	83*	O-RING	1
15	PLUG	1	84	SCREW	1
16	COPPER WASHER	1	85	WASHER	1
17	VALVE BODY	1	86	BRONZE BUSHING	1
18	BUSHING	1	87	OIL BOX PLUG	1
19	PLUG	1	88	O-RING	1
20	COPPER WASHER	1	89	OIL BOX	1
21	SPRING	1	90	SNAP RING	1
22	PIN	1	91	OIL BOX CAP	1
23	STEEL BALL	1	92	STEEL BALL	1
24	HIGH PRESS VALVE	1	93	SPRING	1
25	COMPENSATORY SPRING	1	94	SCREW	4
26*	O-RING	1	95	CAP	1
27	COPPER WASHER	1	96	ANCHOR BOLT	1
28	PIN	1	97	CHAIN JOINT	2
29	SPRING PIN	2	98	CHAIN	1
30	BEARING CAP	1	99	RELEASE ROD	1
31	BEARING	1	100	LEVER	1
32	TABLE	1	101	SPRING PIN	1
33	SNAP RING	1	102	PIN	1
34	STEEL BALL	1	103	SPRING WASHER	3
35*	O-RING	1	104	BOLT	3
36	COPPER WASHER	1	105	CAP	2
37	RELEASE VALVE	1	106	PIN	2
38	SPRING	1	107	STEEL HANDLE	1
39*	O-RING	1	108	NYLON HANDLE	1
40	RELEASE NOZZLE	1	109	WASHER	4
41	CAM	1	110	BEARING	4
42	SCREW	1	111	LOAD WHFEL	2
43	NUT	2	112	ROLLER	4
44	WHEEL SHAFT	1	113	SNAP RING	4
45	BEARING	4	114	LOAD WHEEL SHAFT	2
46	WHEEL	2	115	SNAP RING	2
47	SNAP RING	2	116	WASHER	2
48	WHEEL CAP	2	117	SLEEVE	2
49	SNAP RING	2	118	LEG (LEFT AND RIGHT)	2
50	ROLLER PIN	1	119	SLEEVE	2
51	BUSHING	1	120	SNAP RING	2
52	ROLLER	1	121	PIN	2
53	HANDLE STAND	1	122	NUT	2
54	SPRING PIN	1	123	SPRING WASHER	2
55	HANDLE PIN	1	124	SPACER	2
56	PLUG	1	125	CENTRIFUGAL AXLE	2
57*	O-RING	1	126	WASHER	2
58	PLUG	1	127	SCISSOR PROJECT	1
59	SPRING	1	128	SCREW	1
60	VALVE	1	129	V-NUT	1
61	SCREW	2	130	PIN	2
62	SPRING WASHER	2	131	SLEEVE	2
63*	O-RING	2	132	SPRING WASHER	2
64	BIG CYLINDER	1	133	NUT	2
65	SNAP RING	1	134	FORK	1
66	COPPER PISTON	1	I	PUMP CPL (4~29,34~40,55~91)	
67	LIFTING PISTON	1	II	HAND CPL (92~108)	
68	SNAP RING	1	III	SEAL CPL SEE *	
69	STEEL BALL	1			

INSTRUCTION

RAISE POSITION

Depress the lever #100 and pump handle until pallet has reached the desired height. A clearance of 1" between floor and pallet is usually sufficient to move the load. Do not lift load with one fork or extremity of forks.

NEUTRAL POSITION

The neutral position is found at about 45" between the raise and lower position. This neutral (drive) position disengages the lifting mechanism making the handle free from hydraulic resistance and becomes almost weightless, yet the forks retain their raised position. Always use the neutral position when moving a load.

LOWER POSITION

Pull the lever up to lower the forks. The lever is spring loaded for lowering only, therefore when you release the lever it will automatically return to the natural position.

WARNING

For safe operation of High-Lift Pallet Trucks, Please read the following instructions:

1. Do not operate a High-Lift Pallet Truck unless you are familiar with it and have been trained and authorized to do so. Read all warnings and instructions here and on the truck.
2. Do not operate a High-Lift Pallet Trucks until you have checked its condition, Give special attention to the wheels, handle, forks, lifts and lower control, and brakes (if so equipped). Do not operate damaged or faulty trucks. Do not attempt repairs unless you are trained and authorized to do so.
3. Operate High-Lift Pallet Trucks only from the designated operating position. Never place any part of your body in the lifting mechanism or under the forks or load. Do not carry passengers.
4. Do not handle unstable or loosely stacked loads. Use special care when handling long, high or wide loads to avoid losing the load, striking by standers, or tipping the truck..
5. Do not overload the truck. Check capacity plate for carrying capacity information. Overloading may cause truck to perform incorrectly.
6. The capacity of the truck assumes an evenly-distributed load with the center of the load being at the halfway point of the length of the forks.
7. Make sure that length of the forks match the length of the pallet. Using a pallet truck where the forks are longer than the pallet will damage the truck of the pallet truck is pushed through the pallet and the forks are under a second pallet behind the one being lifted. When lowering the load, make sure the area where the pallet is to places is clear.
8. Observe traffic regulations. Yield right of way to pedestrians. Stop at cross aisles.

High-Lift Pallet Trucks are for general operation on level, flat hard surfaces. If ramps are encountered, the optional hand brake can be ordered, or the truck may be stopped in emergencies by operation the lowering control, which will lower load to the ground, stopping the truck. If the truck has to be stopped in this manner, care should be taken so that no part of your body is near or under the load. It is important not to operate a Hand Pallet truck on a grade with loads that are too heavy to be easily handle by the operator. Since these are manually operated trucks, they are not to be used by operators that are not physically capable of safely handling the trucks with a load.

FAILURE TO FOLLOW THESE INSTRUCTIONS MAY CAUSE SERIOUS INJURY TO THE OPERATOR OR OTHERS.

THREE-MONTH MAINTENANCE SCHEDULE

- 1) Check oil level.
- 2) Lubrication-Joints, pins, axles, push rod, steering wheel's and load roller's bearings with good molybdenum type grease.

ORDERING PARTS

PSL-II High-Lift Pallet Truck are distributed through a sales organization that is eager and capable to service the equipment it has sold you. You will be well taken care of if-whenever parts or repairs are needed-you turn to the source from which you purchased your truck. When doing so "Please be sure to state Model No. and Serial No." of your truck and use part numbers and nomenclature as shown in parts listing giving in this poster. Adherence to the above procedure will save time and provide speedy assistance when it counts.